

PLT3050B (Super Speed Transmission Analyzer) USB3.0 Assembly Production Line Tester

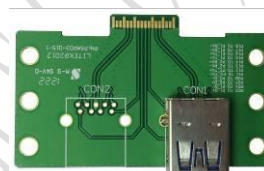


PLT3050B Production Line Tester

✧ Introduction

PLT3050B is a Production Line Tester designed for USB3.0 Assembly Cable manufactory. Since the data rate of USB2.0 is not enough now, a higher rate is strongly recommended by the PC industry. In this way, USB3.0 is developed to meet this request. There are more and more manufactories to produce USB3.0 related products. For cable, how to meet customer's request and guarantee the performance becomes a big issue.

PLT3050B is designed for user as simple as possible, and measuring a DUT is very quick. It's very suitable for mass productions and quality control. It is designed to reserve old version (PLT3050A) functions, not only to include old types of cables but also add USB3.0 Internal cables for testing. The default setting of testing for a cable is 1 second for each mode. In normal case, one DUT would be tested done for 6 seconds. When the environments of manufactory are under consideration, it's also designed with LED lights and voices results. After testing, all of the DUT's results would be saved in PC for further check. The software is designed for several levels in order to let the operator to control easily.



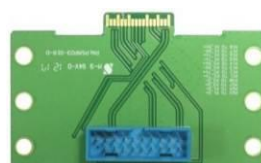
USB3-AR02BR



USB3-BR02BR



USB3-MR02BR



USB3-IR02BR



USB3-AP02BR

Version 1.01

Copyright 2012. All right reserved. This document will be subjected to change without notices
<http://www.litek.tw>

LiTek 麗科科技股份有限公司
LiTek Technologies Co., Ltd.
桃園縣平鎮市環南路188號4樓之3 Tel: +886-3-4951851 Fax: +886-3-4951841

PLT3050B (Super Speed Transmission Analyzer) USB3.0 Assembly Production Line Tester



USB3.0 Type A to A Connection



USB3.0 Type A to B Connection



USB3.0 Type A to Micro Connection



USB3.0 Internal to A Connection

PLT3050B (Super Speed Transmission Analyzer)

USB3.0 Assembly Production Line Tester

✧ Features

- Provide Internal Bus Cable (Internal to Internal and Internal to A Receptacle) on Line testing.
- Provide Active Cable on Line testing.
- Provide A to B Cable on Line testing.
- Provide A to Micro Cable on Line testing.
- Provide A to A Cable on Line testing.
- Easy for use and without professional knowledge.
- Load/ Unload counts, avoid the life time of USB3.0 connectors.
- For SSRX/SSTX, provide four test modes: Low Power·IL Mode·Eye Mode·User Define); The test time range of each mode can be set from 0.1s~1800s.
- Provide project management function, user can build the projects based on different AWG or other commands.
- Hot plug detected. When the DUT is plugged in, U3-PLTSS will run the testing automatically.
- The results will be displayed not only on the PC screen and with voice notice, but also on the LED display of mainframe panel. User can easily check the results.
- Multi-Language Supported, English, Simplified Chinese and Traditional Chinese.

✧ Testing items

- Power/GND Signals : (High Voltage test is not included.)
 - POWER : Provide Open/Short Test.
 - GND : Provide Open/Short Test.
- USB 2.0 Signal :
Testing BER on USB2.0 D+, D- signals over 480Mbps by PRBS7 patterns.
- USB3.0 Signals : (Based on 5Gbps PRBS31 patterns)
 - Low Power Specification : Follow USB 3.0 Low Power Specification, Use Low Voltage power to test TX and RX Signals.
 - Insertion Loss Specification : Test TX and RX signals strictly then IL Specification.(This limit is closed or under -7.5dB at 2.5GHz)
 - Eye Mask Specification : Test TX and RX signals strictly then Eye Mask Specification.(This limit is closed or under TP2 Specification)
 - User Define Specification : User can define Voltage Amplitude, De-Emphasis and Equalizer parameters.(For USB3.0, TX with De-Emphasis function, RX with CTLE function)

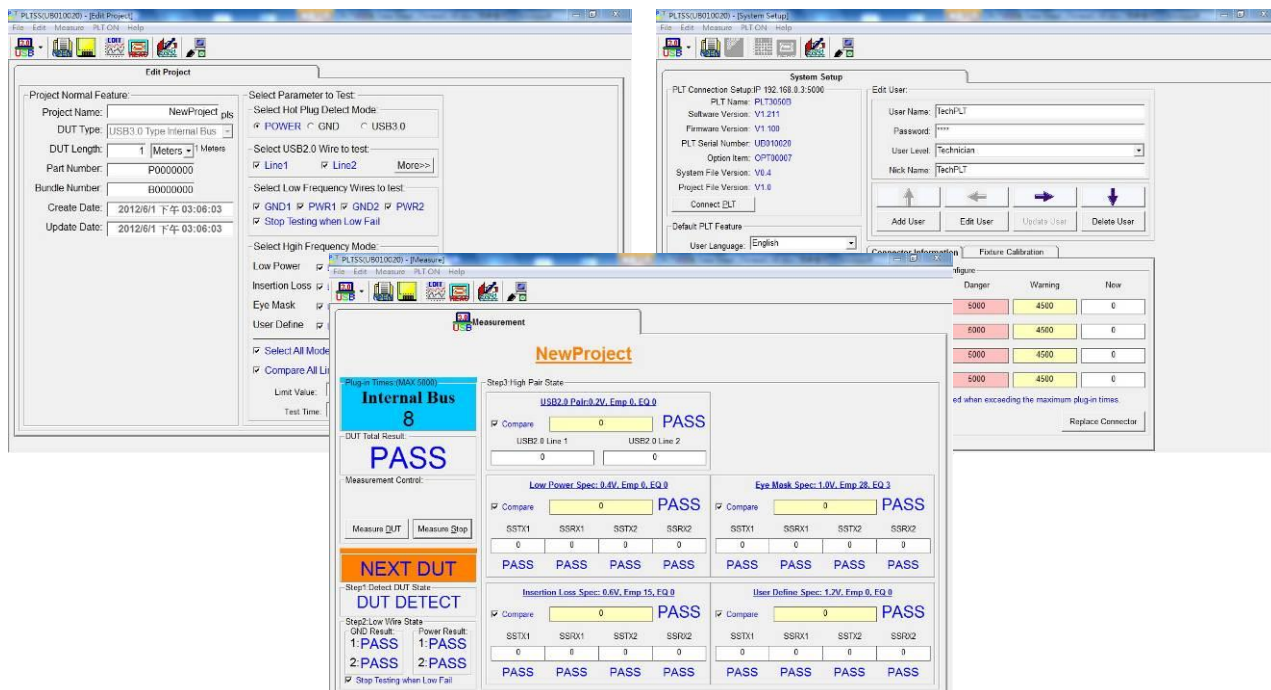
Version 1.01

Copyright 2012.All right reserved. This document will be subjected to change without notices
<http://www.litek.tw>

LiTek 厘科科技股份有限公司
LiTek Technologies Co., Ltd.
桃園縣平鎮市環南路188號4樓之3 Tel:+886-3-4951851 Fax:+886-3-4951841

PLT3050B (Super Speed Transmission Analyzer) USB3.0 Assembly Production Line Tester

❖ Software GUI



❖ Standard Set/Accessory:

Item	Part Number	Quantity
PLT3050B Production Line Tester		1
PLT3050B USB3.0 Type A Receptacle Test Fixture*	USB3-AR02BR	2
PLT3050B USB3.0 Type B Receptacle Test Fixture*	USB3-BR02BR	1
PLT3050B USB3.0 Micro Receptacle Test Fixture*	USB3-MR02BR	1
PLT3050B USB3.0 Type A Plug Test Fixture*	USB3-AP02BR	1
PLT3050B USB3.0 Internal Bus Receptacle Test Fixture*	USB3-IR02BR	2
USB2.0 Type A to B 2M Cable		1
Power Cable		1
U3-PLTSS Software	SW-USB-PLTSS-1.211-0	1

*The Test Fixture is designed by Litek Technologies with the consideration of RF signal performance. To guarantee the quality of measurement, each types suggest to change the test fixture when exceeding the maximum plug-in times.

Version 1.01

Copyright 2012. All right reserved. This document will be subjected to change without notices
<http://www.litek.tw>

LiTek 麗科科技股份有限公司
LiTek Technologies Co., Ltd.
美國麻州平鎮市環南路185號4樓之3 Tel: +886-3-4951851 Fax: +886-3-4951841

PLT3050B (Super Speed Transmission Analyzer) USB3.0 Assembly Production Line Tester

✧ Contact Information

■ Taiwan

- Address : 4F-3, No.18, Hunnan Rd., Pingzhen City, Taoyuan County 32448, Taiwan.
- TEL : +886-3-4951851 #10
- Fax : +886-3-4951841
- Website : <http://www.litek.tw>
- Email : leo@litek.tw
- Contact : Leo Lee

■ China

- Address : 901R Shencai Building Fuyong Boulevard Fuyong Town Baoan District Shenzhen Guangdong
- TEL : +86-755-27326621
- Fax : +86-755-27334763
- Email : thomas@litek.tw
- Contact : Thomas Hung

Version 1.01

Copyright 2012. All right reserved. This document will be subjected to change without notices
<http://www.litek.tw>

LiTek 厘科科技股份有限公司
LiTek Technologies Co., Ltd.
桃園縣平鎮市環南路188號4樓之3 Tel: +886-3-4951851 Fax: +886-3-4951841