

HDMI 1.4 Active Calibration Test Fixture (HDMI-CK02A)

Version 1.0

Introduction:

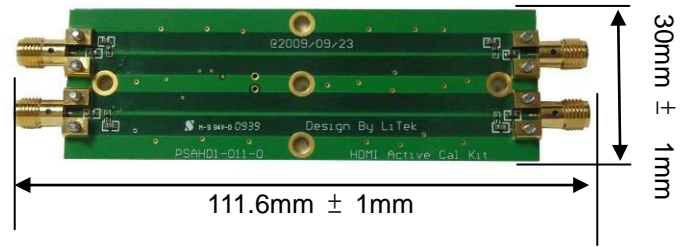
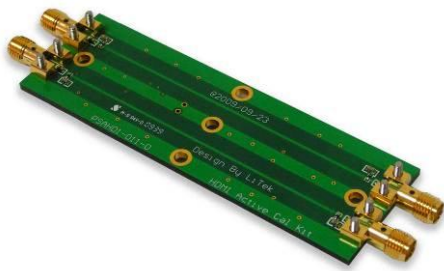


Figure2: Dimension of HDMI-CK02A

LiTek's HDMI 2X Trace Calibration fixture (HDMI-CK02A) can be used to calibrate the response of the HDMI Type A Active test fixture. We can get more accuracy by using the Calibration Fixture before testing.

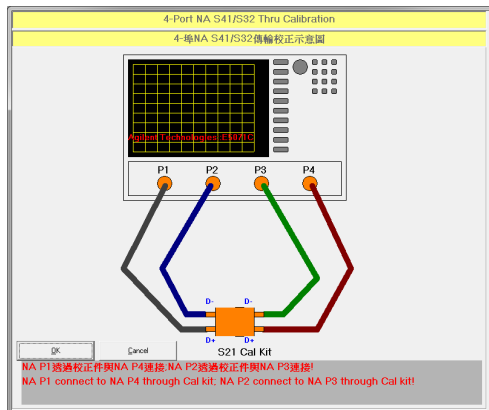
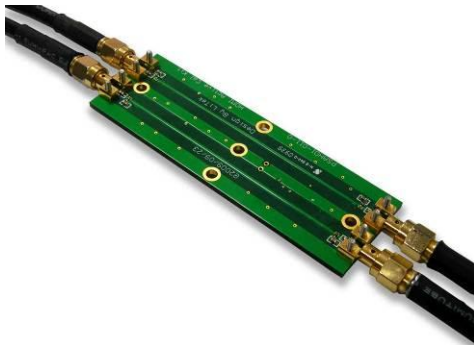


Figure1: HDMI-CK02A

Application:

- TV.
- HDMI Active Test Fixture Calibration.
- HDMI Source devices.

Physical Characteristic:

RF Connector: SMA X4

Dimension: 111.6 X 30 mm²

Features and Performance:

Trace Impedance: 100 +/- 5 Ω

Skew: Less than 3ps.

Loss: Less than 3 dB @3.4GHz.

Contact LiTek:

Taiwan: 4F-3, No. 18, Huannan Rd., Pingzhen City, Taoyuan County 32448, Taiwan Tel: +886-3-4951851 Fax: +886-3-4951841

李文福 經理 Leo Lee leo@litek.tw Cell Phone: +886-922330325

China: 901R Shencai Building Fuyong Boulevard Fuyong Town Baoan District Shenzhen Guangdong

洪瑋駿 經理 Thomas Hung thomas@litek.tw Cell Phone: +86-13823201991